

Weld-on hinges with flat end

7015.00.080E

Weld on hinge, steel, flat end, with fixed steel pin, brass washer

Technical data

Material Steel

Pin Flat end of steel

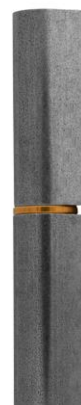
Packaging

Weight / unit 0.088 kg

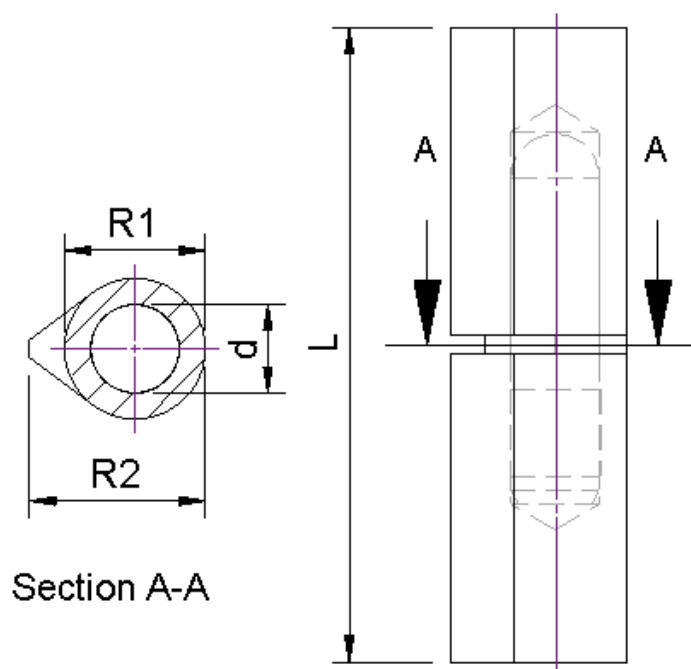
Quantity / pack 25

Dimensions (mm)

L	R1	R2	d
80	13	16	7



The number of holes may vary from the image



Section A-A