

## Weld-on hinges with flat end

### 7015.00.060E

Weld on hinge, steel, flat end, with fixed steel pin, brass washer

#### Technical data

Material Steel

Pin Flat end of steel

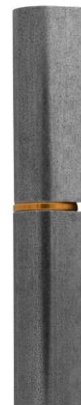
#### Packaging

Weight / unit 0.039 kg

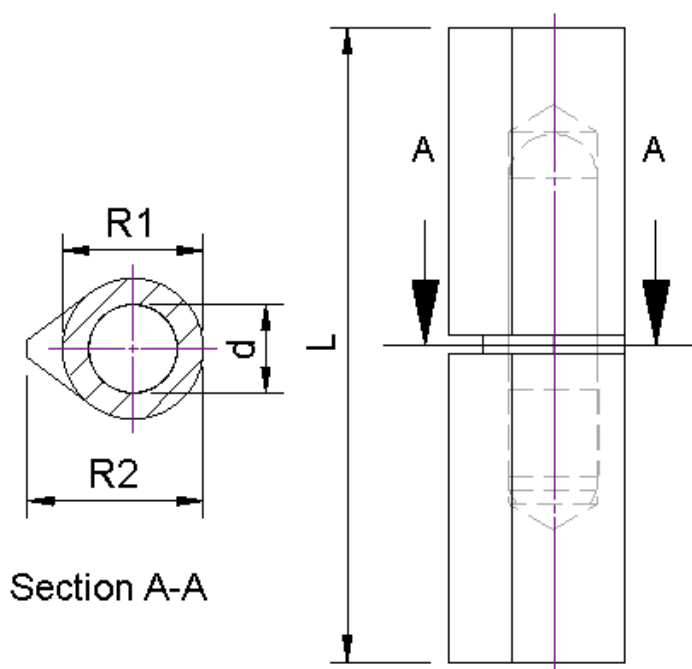
Quantity / pack 25

#### Dimensions (mm)

L	R1	R2	d
60	10	12	5.5



The number of holes may vary from the image



Section A-A