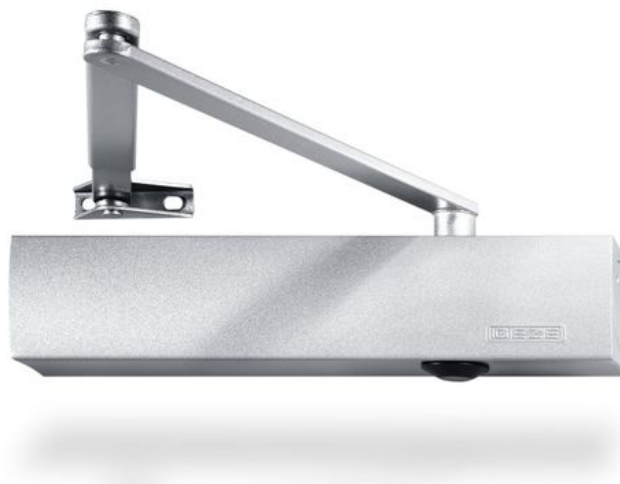


Product data sheet

TS 4000 EN 1-6



Overhead door closer with link arm for single leaf doors with a leaf width of up to 1400 mm

AREAS OF APPLICATION

- Fire and smoke protection doors
- Right and left single-action doors
- Single-action doors up to 1400 mm leaf width
- Door leaf installation hinge side and transom installation opposite hinge side
- Door leaf installation opposite hinge side in parallel arm installation possible



PRODUCT FEATURES

- Closing force with variable adjustment from EN1-6
- Can be used for right and left hand doors without conversion
- Mechanical latching action which accelerates the door shortly before the closed position
- Closing speed can be individually adjusted
- Integrated back check, slows down doors that are thrown open forcefully
- Visual closing force display for easy control of the setting
- All functions can be set from the front (except for latching action)

TECHNICAL DATA

| | |
|---|---|
| Productname | TS 4000 EN 1-6 |
| Closing force in accordance with EN 1154 | EN 1 - 6 |
| Barrier-free in accordance with DIN 18040 up to leaf width (max.) in mm | 1100 mm |
| Leaf width (max.) | 1400 mm |
| Type of installation | Door leaf installation hinge side, Door leaf installation opposite hinge side, Transom installation opposite hinge side |
| Opening angle (max.) | 180 ° |
| Suitability for fire protection doors | Yes |
| Closing force adjustable | Yes, stepless |
| Adjustable closing speed | Yes |
| Latching action adjustable | Yes, via link arm |
| Back check integrated | Yes, hydraulically adjustable |
| Position of closing force adjustment | Front |
| Visual closing force display | Yes |
| Hold-open device | Optional |
| Integrated smoke switch | No |

PART**LINK ARM TS 4000 / 2000**

Standard link arm



| Designation | Description | Ident-No. | Colour |
|-----------------------|-------------|-----------|-----------------------|
| Link arm TS 4000/2000 | Standard | 102425 | according to RAL |
| Link arm TS 4000/2000 | Standard | 102421 | silver-coloured |
| Link arm TS 4000/2000 | Standard | 102423 | white RAL 9016 |
| Link arm TS 4000/2000 | Standard | 102426 | Stainless steel optic |

LINK ARM TS 4000 / 2000 ELONGATED

For transom installation with reveal depth between 70-170 mm



| Designation | Description | Ident-No. | Colour |
|---------------------------------|--|-----------|------------------|
| Link arm TS 4000/2000 elongated | Extended, for transom installation with reveal depth between 70-170 mm | 102434 | according to RAL |
| Link arm TS 4000/2000 elongated | Extended, for transom installation with reveal depth between 70-170 mm | 102431 | silver-coloured |
| Link arm TS 4000/2000 elongated | Extended, for transom installation with reveal depth between 70-170 mm | 102433 | white RAL 9016 |

CLOSER BODY TS 4000

Main body for overhead door closer with link arm EN 1-7



| Designation | Description | Ident-No. | Colour | Closing force in accordance with EN 1154 | Dimensions |
|---------------------|---|-----------|----------------------------|--|------------------|
| GEZE TS 4000 Closer | Closing force EN 1-6 with back check (without link arm) | 102789 | silver-coloured | EN 1 - 6 | 287 x 46 x 60 mm |
| GEZE TS 4000 Closer | Closing force EN 1-6 with back check (without link arm) | 137724 | Stainless steel face plate | EN 1 - 6 | 287 x 46 x 60 mm |
| GEZE TS 4000 Closer | Closing force EN 1-6 with back check (without link arm) | 102791 | white RAL 9016 | EN 1 - 6 | 287 x 46 x 60 mm |
| GEZE TS 4000 Closer | Closing force EN 1-6 with back check (without link arm) | 102792 | according to RAL | EN 1 - 6 | 287 x 46 x 60 mm |

| Designation | Description | Ident-No. | Colour | Closing force in accordance with EN 1154 | Dimensions |
|---------------------|---|-----------|----------------|--|------------------|
| GEZE TS 4000 Closer | Closing force EN 1-6 with back check (without link arm) | 102790 | dark bronze | EN 1 - 6 | 287 x 46 x 60 mm |
| GEZE TS 4000 Closer | Closing force EN 1-6 with back check (without link arm) | 109542 | black RAL 9005 | EN 1 - 6 | 287 x 46 x 60 mm |

ACCESSORIES**COVER CAP DOOR CLOSER ***

For TS 5000 (L)/TS 4000, can only be used for door leaf installation



| Designation | Description | Ident-No. | Colour | Dimensions | Length |
|-------------------------|--|-----------|------------------|--------------------|--------|
| Cover cap door closer * | for TS 5000 / TS 5000 L / TS 4000, can only be used for door leaf installation | 067726 | white RAL 9016 | 298 x 55 x 67.2 mm | 298 mm |
| Cover cap door closer * | for TS 5000 / TS 5000 L / TS 4000, can only be used for door leaf installation | 072696 | Stainless steel | 298 x 55 x 67.2 mm | 298 mm |
| Cover cap door closer * | for TS 5000 / TS 5000 L / TS 4000, can only be used for door leaf installation | 067724 | silver-coloured | 298 x 55 x 67.2 mm | 298 mm |
| Cover cap door closer * | for TS 5000 / TS 5000 L / TS 4000, can only be used for door leaf installation | 000756 | according to RAL | 298 x 55 x 67.2 mm | 298 mm |
| Cover cap door closer * | for TS 5000 / TS 5000 L / TS 4000, can only be used for door leaf installation | 067725 | dark bronze | 298 x 55 x 67.2 mm | 298 mm |

COVER CAP DOOR CLOSER *

For TS 4000/5000, curved shape

| Designation | Description | Ident-No. | Colour | Dimensions | Length |
|-------------------------|---|-----------|--------------------------|------------------|--------|
| Cover cap door closer * | for TS 5000/TS 4000, semi-radial, can only be used for door leaf installation | 092943 | Polished stainless steel | 337 x 51 x 72 mm | 337 mm |
| Cover cap door closer * | for TS 5000/TS 4000, semi-radial, can only be used for door leaf installation | 092944 | Satin stainless steel | 337 x 51 x 72 mm | 337 mm |

COVER CAP DOOR CLOSER *

For TS 4000/5000, rectangular shape

INSTALLATION MATERIAL**SPINDLE EXTENSION**

For TS 4000/TS 2001



| Designation | Description | Ident-No. | Colour | Spindle extension |
|---|---------------|-----------|------------------|-------------------|
| Spindle extension for TS 4000 / TS 2000 | Crown gearing | 103678 | black | 15 mm |
| Spindle extension for TS 4000 / TS 2000 | Crown gearing | 103550 | galvanised | 20 mm |
| Spindle extension for TS 4000 / TS 2000 | Crown gearing | 103679 | black | 20 mm |
| Spindle extension for TS 4000 / TS 2000 | Crown gearing | 139793 | according to RAL | 15 mm |
| Spindle extension for TS 4000 / TS 2000 | Crown gearing | 103548 | galvanised | 10 mm |
| Spindle extension for TS 4000 / TS 2000 | Crown gearing | 103677 | black | 10 mm |
| Spindle extension for TS 4000 / TS 2000 | Crown gearing | 103549 | galvanised | 15 mm |

MOUNTING PLATE SEGMENTAL ARCHED DOOR

for TS 4000, arch height max. 130 mm



| Designation | Description | Ident-No. | Colour |
|--------------------------------------|--------------------------------------|-----------|------------------|
| Mounting plate segmental arched door | for TS 4000, arch height max. 130 mm | 058782 | silver-coloured |
| Mounting plate segmental arched door | for TS 4000, arch height max. 130 mm | 119472 | according to RAL |
| Mounting plate segmental arched door | for TS 4000, arch height max. 130 mm | 058783 | dark bronze |

DRILLING TEMPLATE DOOR CLOSER

For TS 5000/TS 4000/TS 3000/TS 2000



| Designation | Description | Ident-No. |
|-------------------------------|-------------------------------------|-----------|
| Drilling template door closer | for TS 5000/TS 4000/TS 3000/TS 2000 | 053134 |

GLASS CLAMPING SHOE

for TS 5000/TS 4000



| Designation | Description | Ident-No. | Colour | Glass thickness |
|---------------------|---------------------|-----------|------------------|-----------------|
| Glass clamping shoe | for TS 5000/TS 4000 | 009494 | according to RAL | 10 mm |
| Glass clamping shoe | for TS 5000/TS 4000 | 057126 | silver-coloured | 10 mm |
| Glass clamping shoe | for TS 5000/TS 4000 | 057127 | dark bronze | 10 mm |
| Glass clamping shoe | for TS 5000/TS 4000 | 009491 | white RAL 9016 | 10 mm |

MOUNTING PLATE AND COUNTERPLATE ALL-GLASS DOOR

for TS 5000/TS 4000



| Designation | Description | Ident-No. | Colour | Glass thickness |
|--------------------------------------|---------------------|-----------|------------------|-----------------|
| Mounting plates, set, all-glass door | for TS 5000/TS 4000 | 007923 | silver-coloured | 10 mm |
| Mounting plates, set, all-glass door | for TS 5000/TS 4000 | 007926 | according to RAL | 10 mm |
| Mounting plates, set, all-glass door | for TS 5000/TS 4000 | 007924 | dark bronze | 10 mm |

MOUNTING PLATE LINK ARM *

For TS 4000/TS 2000, with slim frames



| Designation | Description | Ident-No. | Colour |
|-------------------------|---------------------------------------|-----------|------------------|
| Mounting plate link arm | for TS 4000/TS 2000, with slim frames | 082506 | according to RAL |
| Mounting plate link arm | for TS 4000/TS 2000, with slim frames | 057109 | silver-coloured |

MOUNTING PLATE DOOR CLOSER

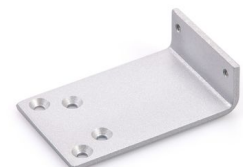
For TS 5000 and TS 4000 with hole pattern in accordance with DIN EN 1154 Supplement 2



| Designation | Description | Ident-No. | Colour |
|----------------------------|---|-----------|-----------------------|
| Mounting plate door closer | for TS 5000/TS 4000 with hole pattern according to DIN EN 1154 Supplement 1 | 068627 | white RAL 9016 |
| Mounting plate door closer | for TS 5000/TS 4000 with hole pattern according to DIN EN 1154 Supplement 1 | 057956 | galvanised |
| Mounting plate door closer | for TS 5000/TS 4000 with hole pattern according to DIN EN 1154 Supplement 1 | 029176 | according to RAL |
| Mounting plate door closer | for TS 5000/TS 4000 with hole pattern according to DIN EN 1154 Supplement 1 | 049185 | silver-coloured |
| Mounting plate door closer | for TS 5000/TS 4000 with hole pattern according to DIN EN 1154 Supplement 1 | 137725 | Stainless steel optic |
| Mounting plate door closer | for TS 5000/TS 4000 with hole pattern according to DIN EN 1154 Supplement 1 | 052351 | dark bronze |

MOUNTING PLATE LINK ARM

For TS 4000/TS 2000 for parallel arm installation



| Designation | Description | Ident-No. | Colour |
|-------------------------|--|-----------|------------------|
| Mounting plate link arm | for TS 4000/TS 2000, for parallel arm installation | 053319 | dark bronze |
| Mounting plate link arm | for TS 4000/TS 2000, for parallel arm installation | 027460 | according to RAL |
| Mounting plate link arm | for TS 4000/TS 2000, for parallel arm installation | 053318 | silver-coloured |

LINTEL CASING BRACKET

for TS 5000/TS 4000



| Designation | Description | Ident-No. | Colour |
|-----------------------|---------------------|-----------|------------------|
| Lintel casing bracket | for TS 5000/TS 4000 | 049240 | silver-coloured |
| Lintel casing bracket | for TS 5000/TS 4000 | 052352 | dark bronze |
| Lintel casing bracket | for TS 5000/TS 4000 | 104451 | according to RAL |

MOUNTING PLATE DOOR CLOSER *

For TS 5000 and TS 4000 with hole pattern in accordance with DIN EN 1154 Supplement 2



| Designation | Description | Ident-No. |
|------------------|---|-----------|
| Mounting plate * | for TS 5000/TS 4000 with hole pattern according to DIN EN 1154 Supplement 1 | 083992 |

* The products designated above may vary in form, type, characteristics, function, or availability depending on the country. Please get in touch with your GEZE contact person if you have any questions.